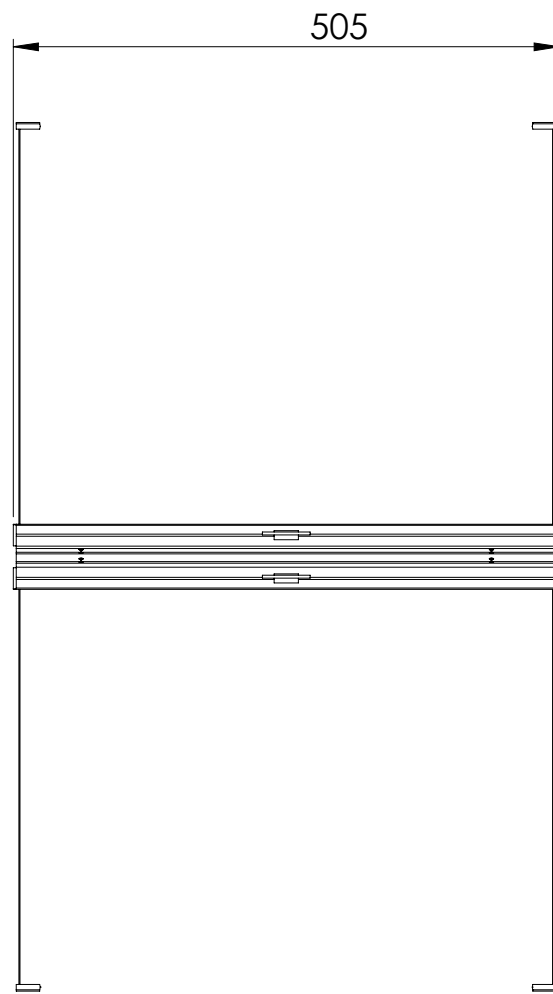
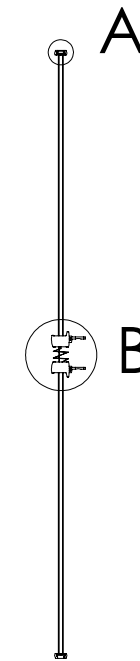
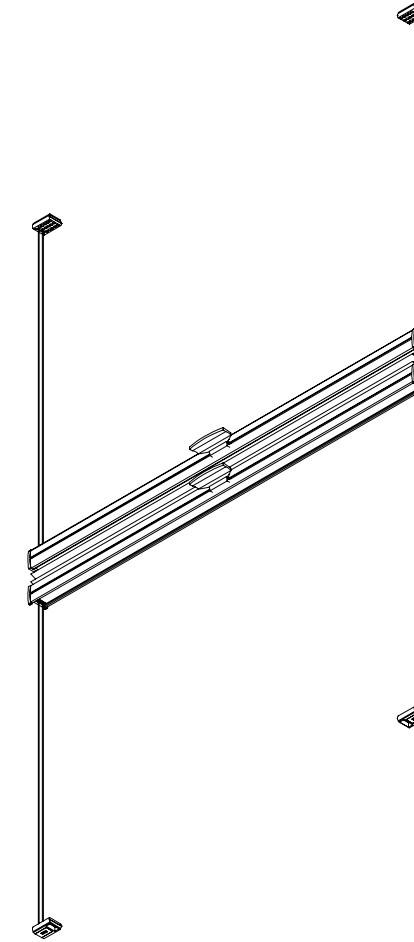


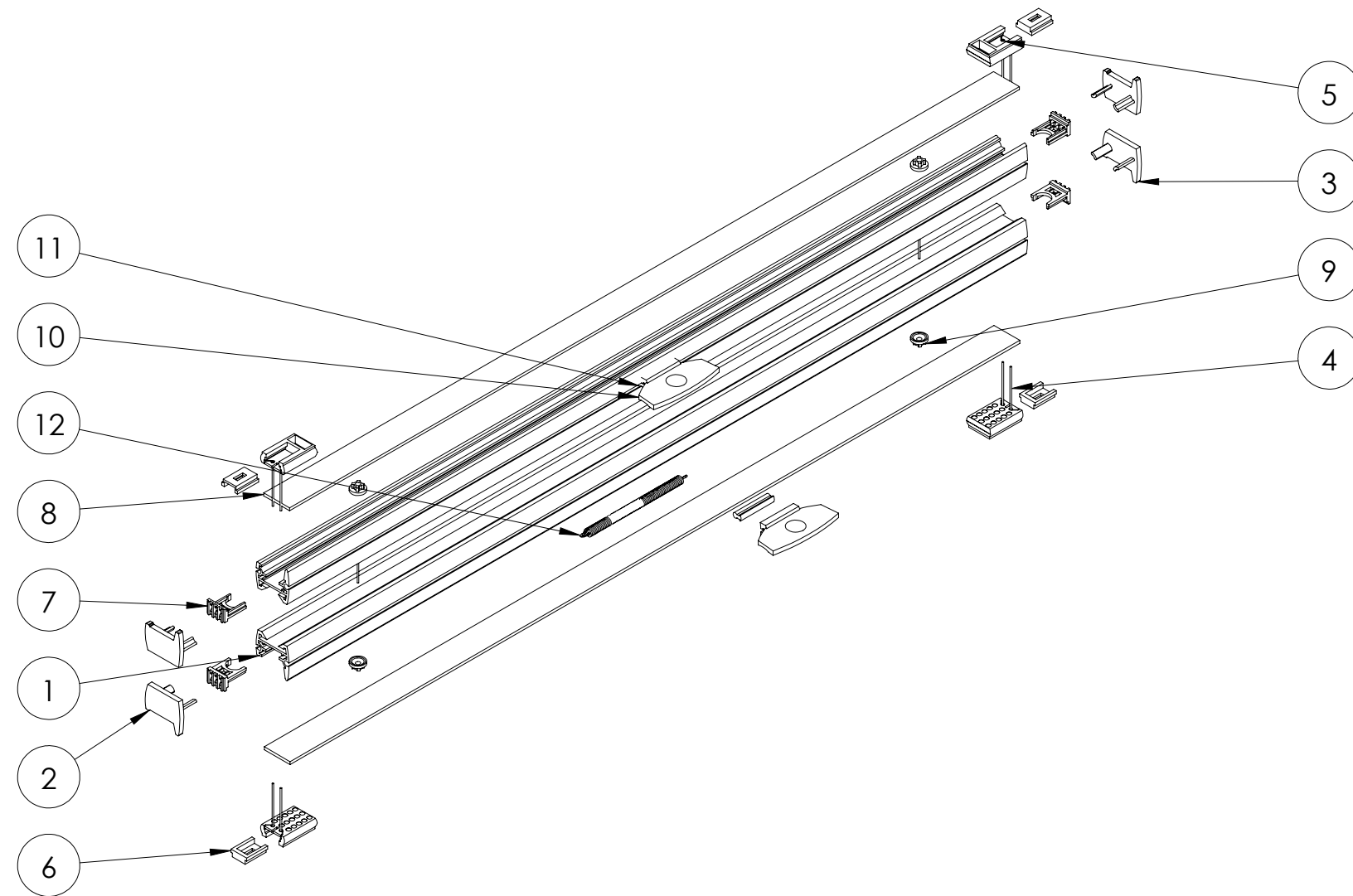


Technical drawing of a component with dimensions 16 and 6. The drawing shows a cross-section of a component with a central rectangular block and two vertical rods extending downwards. The dimension 16 is indicated by a horizontal line with arrows at both ends, and the dimension 6 is indicated by a vertical line with arrows at both ends.

Technical drawing of a mechanical assembly, likely a valve or actuator, showing two views. The top view is a side elevation with dimensions: a total width of 45, a distance of 21 from the right edge to the center of the actuator, and a height of 20. The bottom view is a top-down perspective showing the actuator's profile and a spring mechanism. A dimension of 3 is indicated on the right side of the actuator.



	Generella toleranser enl. ISO 2768-m	Material	Vikt / kg	Ritad Hilcon	Format A3	Skala 1:5	Datum 2026-04-17
		BB24				Sida 1 (3)	Rev A
						Ritn.nr	



ITEM NO.	PART NUMBER	DESCRIPTION	QTY.
1	60048	Profil Nere	2
2	70466-1	EndCap Shuttle L+R 20	2
3	70466-2	EndCap Shuttle L+R 20	2
4	Lina Plisse		10
5	70569	FootPlate Cover	4
6	70605	Fixingblock For FootPlate	4
7	70469	Insert End Cap 3 Hole	4
8	60052	CoverStrip 20roll	2
9	70554	Grommet MK2	4
10	70558-2	Metallhandtag	2
11	70558-1	Metallhandtag hållare	2
12	70535	Fjäder 68mm	1